



Pasamuros Roxtec CF 8/32

Sello de alta densidad de cables con marco de aluminio.

Los sellos de entrada de cables Roxtec CF 8 y CF 32 tienen marcos de aluminio fundido y módulos de sellado que se pueden adaptar a diferentes tamaños de cable.



- Resistente a roedores
- Ligero
- Eficiencia de área
- Permite cables preacabados

Características del producto



IP/UL NEMA

Estructura de instalación



Armarios envolventes & prefabricados

Calificaciones y certificados

Estanquidad

- IP 66/67 según IEC 60529, UL/NEMA 4,4X,12,13

Dimensiones del marco

mm/kg

Las variantes de marcos que figuran a continuación son una selección limitada. Para ver la gama completa de marcos y configuraciones, visite [roxtec.com](https://www.roxtec.com).

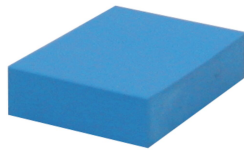
Título	Aperturas de marcos	Espacio útil de sellado	Dimensiones externas WxHxD	Dimensiones de abertura w x h	Peso	N.º de art.
CF 8	1	40 x 80	75 x 140 x 60	61(+1/-1) x 127(+1/-1)	0.6	CSF0000080035
CF 32	2	40 x 160	130 x 230 x 60	110(+1/-1) x 216(+1/-1)	1.4	CSF0000320035

Datos de los componentes de sellado

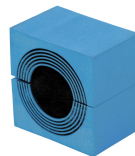
Componentes de sellado



Lubricante Roxtec



Módulo de compensación sólido CM



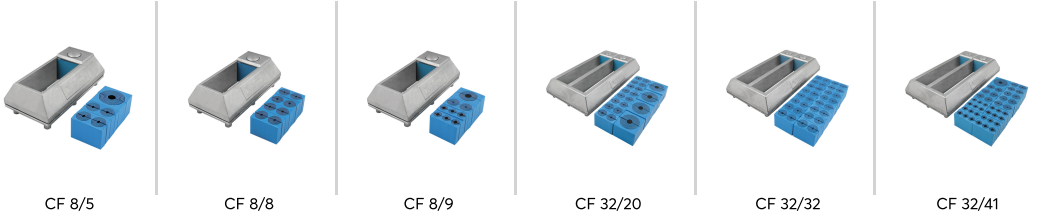
Módulo CM con Multidiameter™

Para obtener información detallada, visite [roxtec.com](https://www.roxtec.com).



Kits de sellos preconfigurados

mm/kg



Título	Configuración	Dimensiones externas WxHxD	Dimensiones de abertura w x h	Peso	N.º de art.
CF 8/5	1x (9.5-32.5), 4x (3.5-16.5)	75 x 140 x 59	61(+0.5/-0.5) x 127(+0.5/-0.5)	0.8	CKT8000000005
CF 8/8	8x (3.5-16.5)	75 x 140 x 59	61(+0.5/-0.5) x 127(+0.5/-0.5)	0.8	CKT8000000008
CF 8/9	2x (3.5-16.5), 1x (10.0-25.0), 6x (3.5-10.5)	75 x 140 x 59	61(+0.5/-0.5) x 127(+0.5/-0.5)	0.8	CKT0000000009
CF 32/20	4x (9.5-32.5), 16x (3.5-16.5)	130 x 230 x 59	110(+0.5/-0.5) x 216(+0.5/-0.5)	2	CKT3200000020
CF 32/32	32x (3.5-16.5)	130 x 230 x 59	110(+0.5/-0.5) x 216(+0.5/-0.5)	2	CKT3200000032
CF 32/41	1x (9.5-32.5), 24x (3.5-10.5), 16x (3.5-16.5)	130 x 230 x 59	110(+0.5/-0.5) x 216(+0.5/-0.5)	2	CKT3200000041

The product information provided by Roxtec does not release the purchaser of the Roxtec system, or part thereof, from the obligation to independently determine the suitability of the products for the intended process, installation and/or use. Roxtec gives no guarantee for the Roxtec system or any part thereof and assumes no liability for any loss or damage whatsoever, whether direct, indirect, consequential, loss of profit or otherwise, occurred or caused by the Roxtec systems or installations containing components not manufactured by an authorized manufacturer and/or occurred or caused by the use of the Roxtec system in a manner or for an application other than for which the Roxtec system was designed or intended. Roxtec expressly excludes any implied warranties of merchantability and fitness for a particular purpose and all other express or implied representations and warranties provided by statute or common law. User determines suitability of the Roxtec system for intended use and assumes all risk and liability in connection therewith. In no event shall Roxtec be liable for indirect, consequential, punitive, special, exemplary or incidental damages or losses. The Roxtec products are offered and sold in accordance with the conditions of the Roxtec General Terms of Sales. The latest version of the Roxtec General Terms of Sales can be downloaded from <https://www.roxtec.com/en/about-us/about-roxtec/general-terms-of-sales/> We reserve the right to make changes to the product and technical information without further notice. Any errors in print or entry are no claims for indemnity. The content of this publication is the property of Roxtec International AB and is protected by copyright. This document was generated on: 2025-11-05