



# Sello Roxtec CRL

Sellados circulares para armarios y casetas de telecomunicaciones.

El Roxtec CRL es una solución de sellado redonda para orificios de 4" y de 5". El espacio útil de sellado cuadrado del marco es apto para módulos de sellado, cables, tuberías y fibra óptica. La unidad de compresión está integrada en el marco.



- Ligero
- Eficiencia de área
- Se adapta a cables y tuberías de diferentes tamaños

## Características del producto



IP/UL NEMA

## Estructura de instalación



Armarios envolventes & prefabricados

## Calificaciones y certificados

### Estanquidad

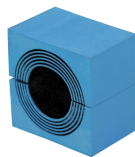
- IP 54 según IEC 60529

## Datos de los componentes de sellado

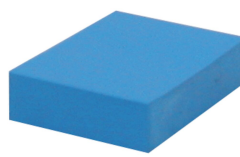
### Componentes de sellado



Gel de montaje Roxtec



Módulo CM con Multidiameter™



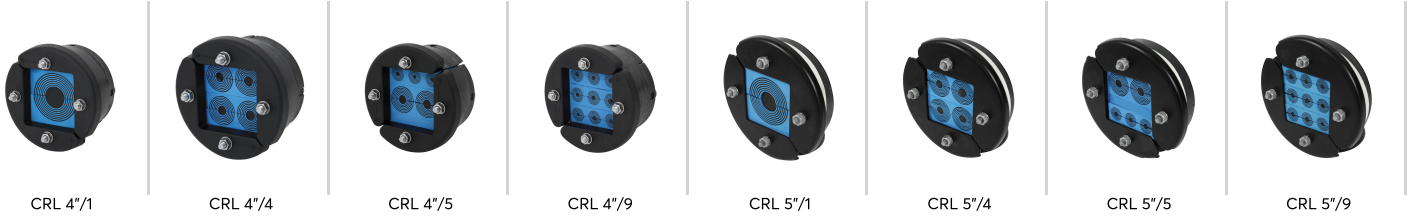
Módulo de compensación sólido CM

Para obtener información detallada, visite [roxtec.com](https://www.roxtec.com).



# Kits de sellos preconfigurados

mm/kg



Título	Configuración	Dimensiones de abertura Ø	Peso	N.º de art.
CRL 4"/1	1x (24.0-54.0)	98 - 99	0.5	102997
CRL 4"/4	4x (10.0-29.0)	98 - 99	0.6	102993
CRL 4"/5	2x (10.0-29.0), 3x (3.5-16.5)	98 - 99	0.6	102994
CRL 4"/9	9x (4.0-16.5)	98 - 99	0.6	102995
CRL 5"/1	1x (24.0-54.0)	124 - 125	1	CRL0005010012
CRL 5"/4	4x (10.0-29.0)	124 - 125	1	CRL0005040012
CRL 5"/5	2x (10.0-29.0), 3x (4.0-16.5)	124 - 125	1	CRL0005050012
CRL 5"/9	9x (4.0-16.5)	124 - 125	1	CRL0005090012

The product information provided by Roxtec does not release the purchaser of the Roxtec system, or part thereof, from the obligation to independently determine the suitability of the products for the intended process, installation and/or use.

Roxtec gives no guarantee for the Roxtec system or any part thereof and assumes no liability for any loss or damage whatsoever, whether direct, indirect, consequential, loss of profit or otherwise, occurred or caused by the Roxtec systems or installations containing components not manufactured by an authorized manufacturer and/or occurred or caused by the use of the Roxtec system in a manner or for an application other than for which the Roxtec system was designed or intended.

Roxtec expressly excludes any implied warranties of merchantability and fitness for a particular purpose and all other express or implied representations and warranties provided by statute or common law. User determines suitability of the Roxtec system for intended use and assumes all risk and liability in connection therewith. In no event shall Roxtec be liable for indirect, consequential, punitive, special, exemplary or incidental damages or losses.

The Roxtec products are offered and sold in accordance with the conditions of the Roxtec General Terms of Sales. The latest version of the Roxtec General Terms of Sales can be downloaded from <https://www.roxtec.com/en/about-us/about-roxtec/general-terms-of-sales/>

We reserve the right to make changes to the product and technical information without further notice. Any errors in print or entry are no claims for indemnity. The content of this publication is the property of Roxtec International AB and is protected by copyright.

This document was generated on: 2025-10-10