



# Roxtec EzEntry™

Sellos de entrada de cables ligeros con marco de material compuesto.

Los sellos de entrada de cables Roxtec EzEntry™ tienen marcos ligeros de material compuesto y encajan directamente en aberturas estándar. Los sellos están disponibles en seis tamaños, admiten de 4 a 32 cables y ofrecen protección IP 66/67.



- Resistente a la corrosión
- Eficiencia de área
- Permite cables precabados

## Características del producto



IP/UL NEMA

## Estructura de instalación



Armarios envolventes & prefabricados

## Calificaciones y certificados

### Estanquidad

- IP 66/67 según IEC 60529, UL/NEMA 4,4X,12,13

## Dimensiones del marco

mm/kg

Las variantes de marcos que figuran a continuación son una selección limitada. Para ver la gama completa de marcos y configuraciones, visite [roxtec.com](https://www.roxtec.com).

Título	Aperturas de marcos	Espacio útil de sellado	Dimensiones externas WxHxD	Dimensiones de abertura w x h	Peso	N.º de art.
EZENTRY 4 MINI FRAME ASSEMBLY	1	40 x 40	76 x 76 x 24	37(+0/-1) x 42(+0/-2)	0.08	EZ00044000000
EZENTRY 16 FRAME ASSEMBLY	1	40 x 160	90 x 228 x 34	37(+1/-0) x 158(+2/-0)	0.44	EZ00016000000
EZENTRY 16 COUNTER FRAME	0	0 x 0	215 x 17.5 x 12	0(+0/-0) x 0(+0/-0)	0.24	2CV0000000016
EZENTRY 24 FRAME ASSEMBLY	2	40 x 120	90 x 325 x 41	37(+1/-0) x 255(+2/-0)	0.7	EZ00024000000
EZENTRY 32 FRAME ASSEMBLY	2	40 x 160	90 x 405 x 41	37(+1/-0) x 335(+2/-0)	0.9	EZ00032000000
EZENTRY 4 FRAME ASSEMBLY	1	40 x 40	70 x 97 x 31	37(+1/-0) x 42(+2/-0)	0.21	EZ00040000000
EZENTRY 10 FRAME ASSEMBLY	1	40 x 100	70 x 168 x 31	37(+1/-0) x 108(+2/-0)	0.27	EZ00010000000



# Datos de los componentes de sellado

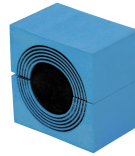
## Componentes de sellado



Gel de montaje Roxtec



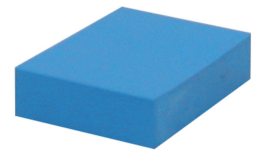
Lubricante Roxtec



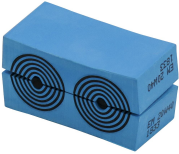
Módulo CM con Multidiameter™



Módulo GM de con Multidiameter™



Módulo de compensación sólido CM



Módulo EM de con Multidiameter™

Para obtener información detallada, visite [roxtec.com](https://www.roxtec.com).

# Kits de sellos preconfigurados

mm/kg



EZENTRY 4/4



EZENTRY 10/4



EZENTRY 10/7



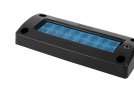
EZENTRY 10/10



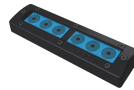
EZENTRY 16/4



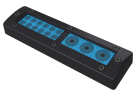
EZENTRY 16/10



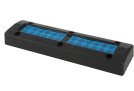
EZENTRY 16/16



EZENTRY 24/6



EZENTRY 24/15



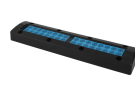
EZENTRY 24/24



EZENTRY 32/8



EZENTRY 32/20



EZENTRY 32/32

Título	Configuración	Dimensiones externas WxHxD	Dimensiones de abertura w x h	Peso	N.º de art.
EZENTRY 4/4	4x (3.5-16.5)	70 x 97 x 31	37(+1/-0) x 42(+2/-0)	0.22	EZ00000000044
EZENTRY 10/4	2x (3.5-16.5), 2x (9.5-32.5)	70 x 168 x 31	37(+1/-0) x 108(+2/-0)	0.38	EZ00000001004
EZENTRY 10/7	6x (3.5-16.5), 1x (9.5-32.5)	70 x 168 x 31	37(+1/-0) x 108(+2/-0)	0.39	EZ00000001007
EZENTRY 10/10	10x (3.5-16.5)	70 x 168 x 31	37(+1/-0) x 108(+2/-0)	0.35	EZ00000001010
EZENTRY 16/4	4x (9.5-32.5)	90 x 228 x 34	37(+1/-0) x 158(+2/-0)	0.6	EZ00000001604
EZENTRY 16/10	8x (3.5-16.5), 2x (9.5-32.5)	90 x 228 x 34	37(+1/-0) x 158(+2/-0)	0.7	EZ00000001610
EZENTRY 16/16	16x (3.5-16.5)	90 x 228 x 34	37(+1/-0) x 158(+2/-0)	0.7	EZ00000001616
EZENTRY 24/6	6x (9.5-32.5)	90 x 325 x 41	37(+1/-0) x 255(+2/-0)	1.2	EZ00000002406
EZENTRY 24/15	12x (3.5-16.5), 3x (9.5-32.5)	90 x 325 x 41	37(+1/-0) x 255(+2/-0)	1.2	EZ00000002415
EZENTRY 24/24	24x (3.5-16.5)	90 x 325 x 41	37(+1/-0) x 255(+2/-0)	1.1	EZ00000002424
EZENTRY 32/8	8x (9.5-32.5)	90 x 405 x 41	37(+1/-0) x 335(+2/-0)	1.5	EZ00000003208
EZENTRY 32/20	16x (3.5-16.5), 4x (9.5-32.5)	90 x 405 x 41	37(+1/-0) x 335(+2/-0)	1.5	EZ00000003220
EZENTRY 32/32	32x (3.5-16.5)	90 x 405 x 41	37(+1/-0) x 335(+2/-0)	1.5	EZ00000003232



The product information provided by Roxtec does not release the purchaser of the Roxtec system, or part thereof, from the obligation to independently determine the suitability of the products for the intended process, installation and/or use.

Roxtec gives no guarantee for the Roxtec system or any part thereof and assumes no liability for any loss or damage whatsoever, whether direct, indirect, consequential, loss of profit or otherwise, occurred or caused by the Roxtec systems or installations containing components not manufactured by an authorized manufacturer and/or occurred or caused by the use of the Roxtec system in a manner or for an application other than for which the Roxtec system was designed or intended.

Roxtec expressly excludes any implied warranties of merchantability and fitness for a particular purpose and all other express or implied representations and warranties provided by statute or common law. User determines suitability of the Roxtec system for intended use and assumes all risk and liability in connection therewith. In no event shall Roxtec be liable for indirect, consequential, punitive, special, exemplary or incidental damages or losses.

The Roxtec products are offered and sold in accordance with the conditions of the Roxtec General Terms of Sales. The latest version of the Roxtec General Terms of Sales can be downloaded from <https://www.roxtec.com/en/about-us/about-roxtec/general-terms-of-sales/>

We reserve the right to make changes to the product and technical information without further notice. Any errors in print or entry are no claims for indemnity. The content of this publication is the property of Roxtec International AB and is protected by copyright.

This document was generated on: 2025-10-10

